



747

PRODUCT BROCHURE

The perfect  
balance:

**Elegant &  
Contemporary**







# The New lifestyle

Embracing the ethos of  
contemporary living:

747 encourages a balanced approach to  
modernity, where personal well-being  
and connectivity converge in a dynamic,  
yet harmonious rhythm of everyday life.







# Jabi Research & Institution District

Embrace a lifestyle of comfort and connectivity in a thriving environment designed for your needs. At 747, community is at the heart of our philosophy. The property features lush green spaces and communal areas where residents can relax, socialize, and build lasting relationships. Our co-living concept encourages interaction and fosters a sense of belonging among residents, creating a warm and welcoming atmosphere.

## Beyond the living spaces

747 offers a range of amenities such as fitness centers, study lounges, and recreational areas, all designed to enhance your living experience. With our commitment to providing exceptional service and a supportive community, 747 is more than just a place to live – it's a place to thrive.





# Luxury Living

Modern elegance  
meets timeless comfort





# The Residence Experience

Designed for family fun, 747 offers green areas and playgrounds where you can explore, create memories, and enjoy a safe environment.

Enjoy the benefits of contemporary amenities and a vibrant community, ensuring a well-rounded and enriching experience for all residents.











## The Student Journey

The 747 community embodies warmth, comfort, and a dynamic lifestyle, offering a sanctuary for both relaxation and vibrant social interaction. From cozy living spaces designed for tranquility to lively common areas that foster connections, 747 Estate creates a haven where smiles bloom naturally.



# Atmosphere of Community

Whether lounging in serene surroundings or engaging in physical activities, residents and students find themselves immersed in an atmosphere that encourages happiness and fulfillment, making every moment a celebration of community and well-being.





# Our Homes

Discover your ideal home at 747, a vibrant co-living community nestled within a sprawling 4-hectare property. Choose from an array of luxurious living spaces. Located in the Institution and Research District on Jabi Airport Road, Abuja.

747 offers a unique blend of modern living and convenience, perfectly situated near top educational institutions. Embrace a lifestyle of comfort and connectivity in a thriving environment designed for your needs.





# 747 House types

**4**

**BEDROOM  
TERRACE DUPLEX**

**3**

**BEDROOM  
TERRACE DUPLEX**

**2**

**BEDROOM  
PENTHOUSE**

**1**

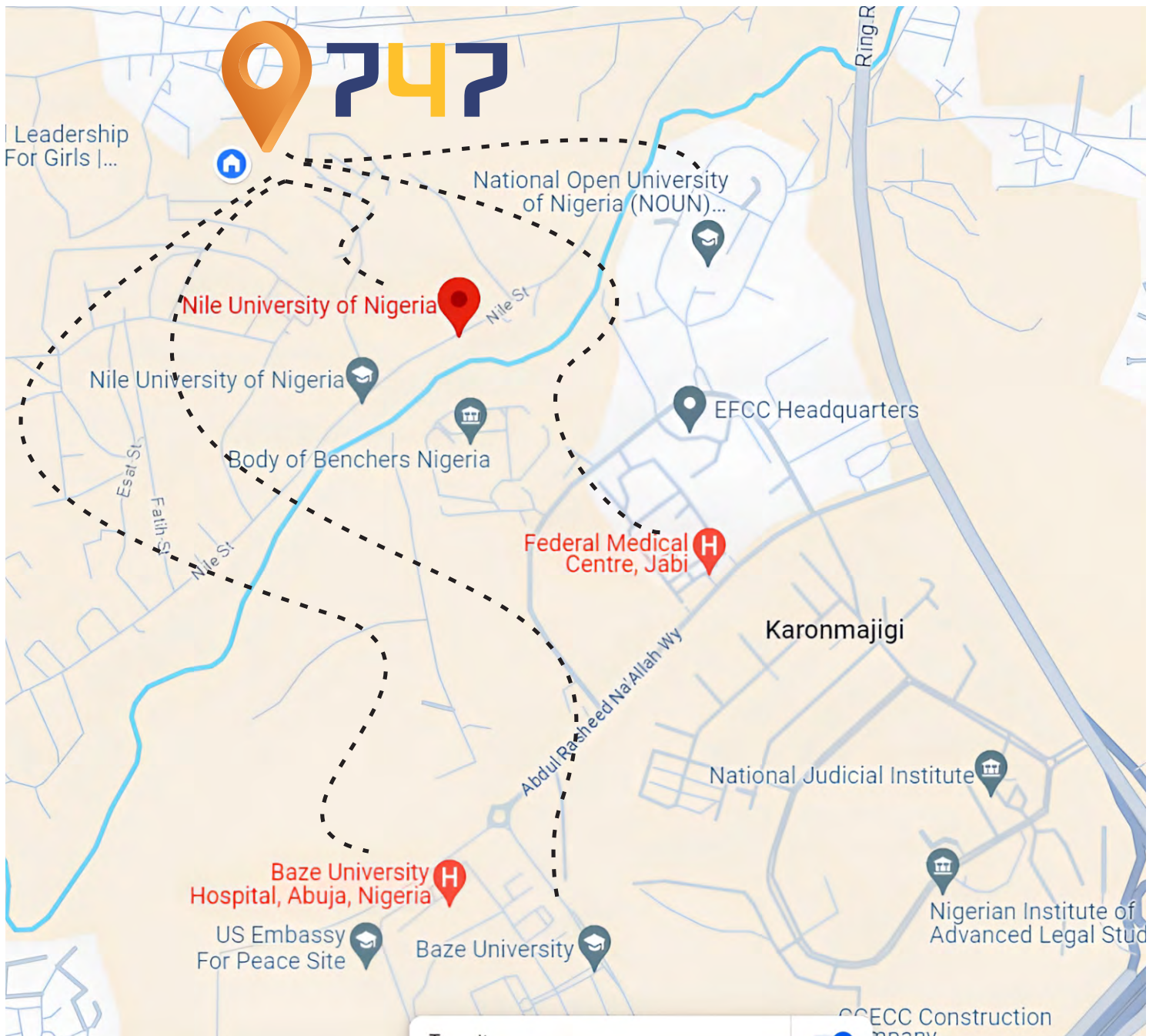
**BEDROOM  
PENTHOUSE**

**STUDIO**

**APARTMENT**







**0.5km** radius from

**3** premium  
universities

Baze University

Nile University

National Open University



Captivating, picturesque, thrilling, serene... Experience the best of the Research and Institution District. Prime locations are just a few minutes' stroll away, offering endless opportunities to explore and enjoy. Enjoy top-notch amenities including a supermarket, tech hub, swimming pool, restaurant and café, WiFi, and more. Discover the vibrant life around 747, where there's always something to see and do





# Estate Facilities



Year-round Events



24/7 Security



Gym



Restaurant



Tech Innovation Hub



Bike storage



On-site Laundry



Wifi









# Our Housing Units

Perfectly positioned for success, our housing units offer modern living with easy access to top universities. It's the ideal place for students to thrive, providing a convenient and supportive environment for academic achievement and personal growth.









# 4

## **BEDROOM TERRACE DUPLEX +BQ (OPTIONAL)**

This exquisite 4-bedroom terrace duplex offers modern living at its finest. Each bedroom is generously sized, providing ample space for relaxation and comfort. Additionally, there's an optional BQ (boys' quarters) for extra living space or staff accommodation. With a perfect blend of luxury and functionality, this home is ideal for families seeking a sophisticated and comfortable lifestyle.







## TERRACE GROUND FLOOR

LIVING ROOM	51m <sup>2</sup>
BEDROOM	19m <sup>2</sup>
KITCHEN	5m <sup>2</sup>
BATHROOM	2m <sup>2</sup>
VISITOR'S TOILET	3m <sup>2</sup>



## TERRACE FIRST FLOOR

BEDROOM	17m <sup>2</sup>
MASTER BEDROOM	27m <sup>2</sup>
BEDROOM	17m <sup>2</sup>
STAIRHALL	16m <sup>2</sup>
BATHROOM	6m <sup>2</sup>
BOX ROOM	3m <sup>2</sup>
TERRACE	10m <sup>2</sup>



# 3

## **BEDROOM TERRACE DUPLEX +BQ (OPTIONAL)**

This charming 3-bedroom terrace duplex combines modern design with comfortable living. Each bedroom is well-sized and thoughtfully designed to provide a cozy and private retreat. An optional BQ (boys' quarters) offers additional space for guests or staff. Perfect for families or professionals, this duplex provides a harmonious blend of style and practicality in a desirable location.







## TERRACE GROUND FLOOR

LIVING ROOM/DINING	42m <sup>2</sup>
BEDROOM	12m <sup>2</sup>
KITCHEN	10m <sup>2</sup>
VISITOR'S TOILET	3m <sup>2</sup>



## TERRACE FIRST FLOOR

BEDROOM	19m <sup>2</sup>
BEDROOM	23m <sup>2</sup>
STAIRHALL	14m <sup>2</sup>
BATHROOM	6m <sup>2</sup>
BATHROOM	5m <sup>2</sup>
CLOSET	4m <sup>2</sup>
TERRACE	7m <sup>2</sup>



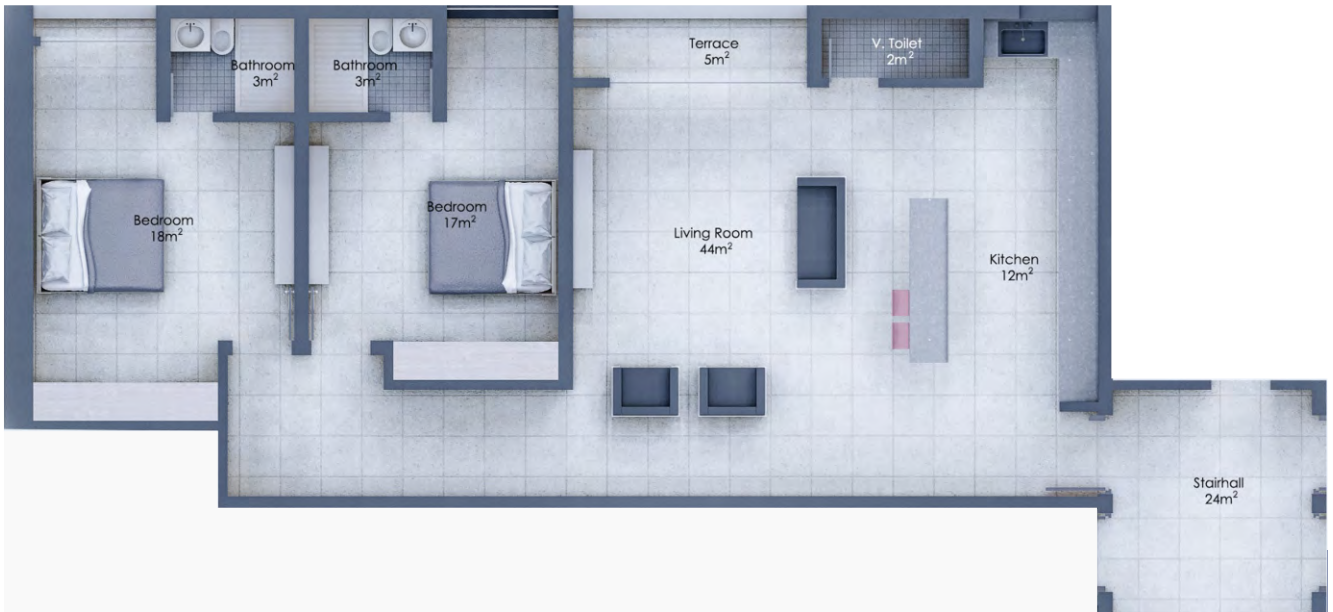
# 2

## BEDROOM PENTHOUSE APARTMENT

Located on the pent-floors of the 4 bedroom terraces, this stylish 2-bedroom apartment offers a perfect blend of comfort and contemporary design. Each bedroom is spacious, providing a serene environment for rest and relaxation. This apartment is perfect for young professionals or small families seeking a sophisticated urban lifestyle in a prime location.







## PENTHOUSE APARTMENT FLOOR

BEDROOM	16m <sup>2</sup>
BEDROOM	17m <sup>2</sup>
LIVING ROOM	44m <sup>2</sup>
KITCHEN	12m <sup>2</sup>
STAIRHALL	24m <sup>2</sup>
BATHROOM	3m <sup>2</sup>
BATHROOM	3m <sup>2</sup>
TERRACE	5m <sup>2</sup>



# 1

## BEDROOM PENTHOUSE APARTMENT

Situated on the pent-floors of the 3 bedroom terraces, this cozy 1-bedroom apartment is the epitome of modern urban living, featuring a well-designed layout that maximizes space and comfort.

Perfect for young professionals or couples, this apartment offers a stylish and convenient living space in a sought-after location.







## PENTHOUSE APARTMENT FLOOR

BEDROOM	30m <sup>2</sup>
LIVING ROOM	36m <sup>2</sup>
KITCHEN	9m <sup>2</sup>
BATHROOM	6m <sup>2</sup>
VISITOR'S TOILET	2m <sup>2</sup>
TERRACE	5m <sup>2</sup>



# STUDIO APARTMENT

This modern studio apartment is designed for efficiency and style, offering a bright and open living space that seamlessly integrates living, and sleeping areas. Ideal for young professionals or students, it provides a simple and convenient home in the heart of the city, perfect for those seeking a stylish urban lifestyle.







## STUDIO APARTMENT FLOOR

BEDROOM 13m<sup>2</sup>

BATHROOM 3m<sup>2</sup>





LET'S  
GET YOU  
**STARTED**  
TODAY

**0809 998 0003**

No.1 Audu Ogbe Street, Jabi, Abuja, Nigeria

[www.1sqmbydantata.com](http://www.1sqmbydantata.com)

[hello@1sqmbydantata.com](mailto:hello@1sqmbydantata.com)

    1sqmbydantata